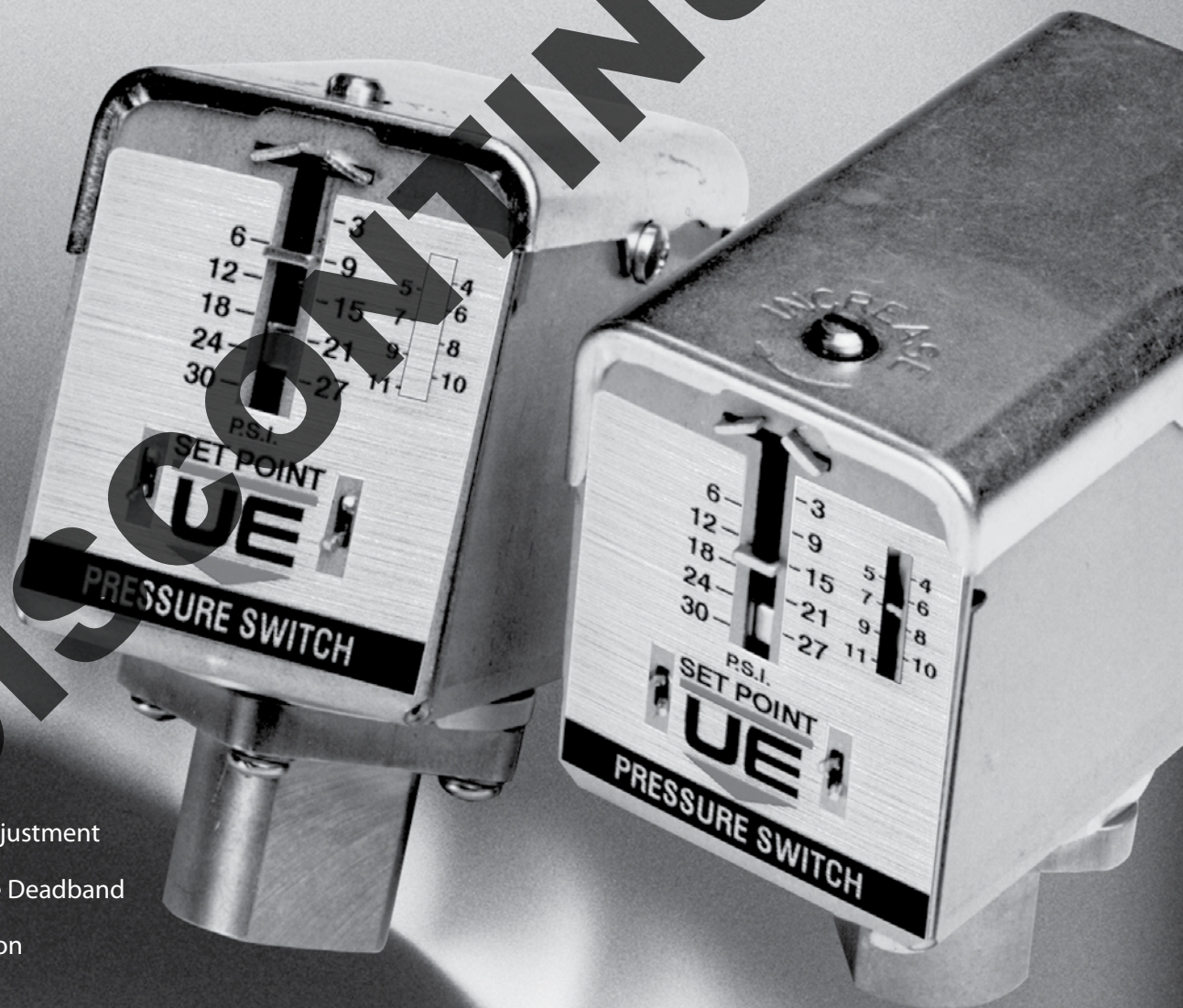




25 Series

25 Series

PRESSURE SWITCH



FEATURES

- External Setpoint Adjustment
- Internally Adjustable Deadband
- Compact Construction
- All Metal Enclosure



UNITED ELECTRIC
CONTROLS



25 Series

25 Series

overview

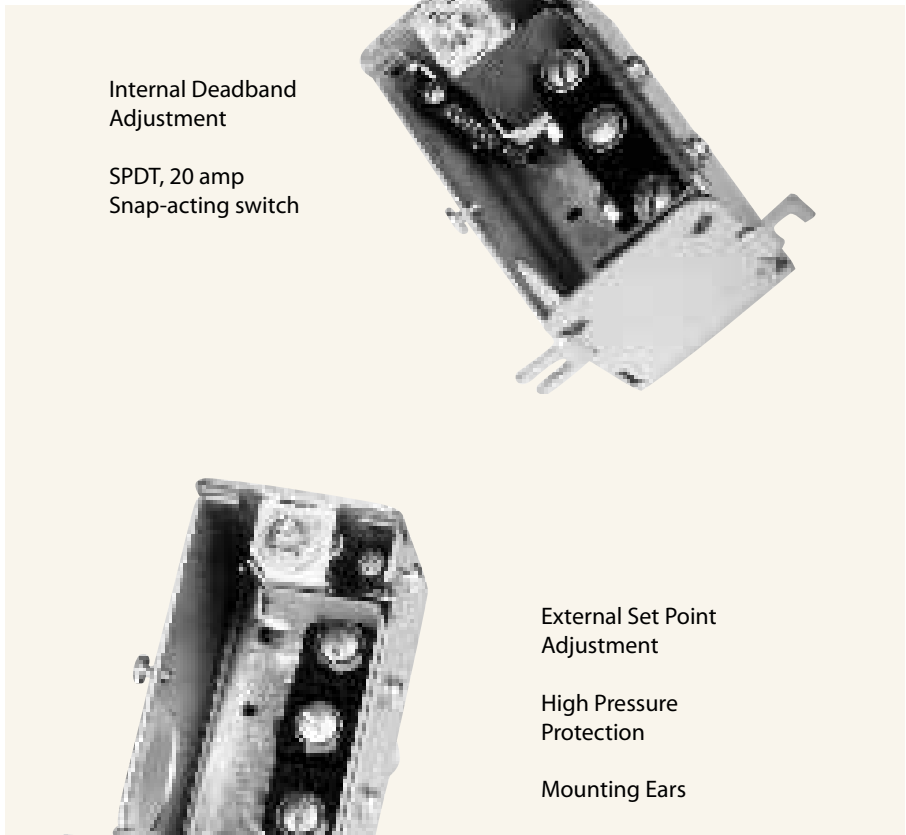
The 25 Series is a low cost pressure switch featuring an externally adjustable set point and an internally adjustable deadband. It offers a self contained solution for direct control of AC loads up to 20 amps with adjustable pressure ranges up to 475 psi.

The adjustable set point and deadband feature is a real benefit for applications where a full function logic controller would not be necessary. Technicians can make on-the-fly corrections during development testing, start-up or maintenance. The compact design and low cost also makes the 25 Series well suited for installation on OEM equipment or in panels.

features

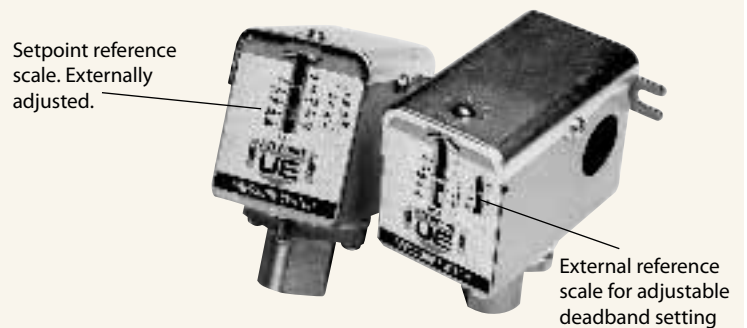
- External Adjustment
- Adjustable Deadband
- Compact Construction
- All Metal Enclosure

The 25 Series features proven diaphragm sensing technology, a 20 amp snap-acting switch, and adjustable ranges up to 475 psi, highlighting its versatility. The 25 Series is cULus listed and is available with a Buna-N, Viton® or EPDM diaphragm pressure sensor. The switch comes with a standard brass pressure connection; however, other materials are available for volume applications. All models achieve a rated proof pressure of 600 psi and are contained in a NEMA housing. The robust design provides repeatability of $\pm 1\%$, even when subjected to shock and vibration.



Applications

The 25 Series Adjustable Pressure Switch offers an easy-to-install solution for direct control of HVAC fans and blowers, as well as control of pumps, compressors and valves. The switch is ideal for alarm and shutdown applications where the user must protect people, equipment or the environment.



technology

The 25 Series relies on simple, but dependable technology to achieve its purpose: a cost-effective, ideal product for direct pump monitoring/control and similar applications. The 25 uses a diaphragm to sense changes in pressure, which are transmitted through a lever to the 20A snap-action switch. Changes to set point are accomplished easily while the unit is under pressure through the external adjusting screw. This adjustment “pre-loads” the lever, which results in excellent vibration-resistance. On many models, the deadband (the difference between actuation and de-actuation) is also field adjustable, giving the user flexibility in configuring the product to the application.



25 Series

25 Series

specifications

STORAGE TEMPERATURE -65 to 160°F (-54 to 71°C)

OPERATING AMBIENT TEMPERATURE 0 to 160°F (17 to 71°C) Set point shifts less than 1% of range for a 50°F (28°C) ambient temperature change

MAXIMUM MEDIA TEMPERATURE
Buna-N sensor: 200°F (93°C)
Viton® sensor: 250°F (121°C)
EPDM sensor: 250°F (121°C)

ENCLOSURE Zinc plated steel with bright chromate finish

ENCLOSURE CLASSIFICATION Complies with enclosure type 1

SHOCK Set point repeats after 15 G, 10 millisecond duration

VIBRATION Set point repeats after 2.5 G, 5 to 500 Hz

SET POINT REPEATABILITY Typically $\pm 1\%$ of span

SWITCH OUTPUT One SPDT, snap-acting switch

ELECTRICAL RATINGS
20 A @ 480 VAC resistive
1 HP @ 125 VAC Resistive, adjustable deadband versions (choice F)
2 HP @ 250 VAC Resistive, adjustable deadband versions (choice F)

ELECTRICAL CONNECTION 7/8" hole for optional NPT conduit connector

WEIGHT 16 oz.

PRESSURE CONNECTION 1/4" NPT female Brass, or 1/8" NPT female Brass

MOUNTING Surface mount with two screws through clearance holes, or mount by pressure connection
Viton is a registered trademark of E.I. DuPont Company.

approvals



UL 873 listed, files # E10667, # E57086
CSA C22.2 No. 24-1993, Files # E10667, # 57086



CE Compliance with LVD (Low Voltage Directive)

model chart

Adjustable Deadband Version - Deadband Choice A

Model	Adjustable Range*				Adjustable Deadband Range				Max. Working Pressure		Proof Pressure	
	Low end of range on fall		High end of range on rise									
	psi	bar	psi	bar	psi	bar	psi	bar	psi	bar	psi	bar
A	3	0,2	30	2,1	5	0,3	11	0,8	30	2,1	600	41,4
B	20	1,4	200	13,8	20	1,4	70	4,83	200	13,8	600	41,4
C	25	1,7	475	32,8	35	2,4	140	9,7	475	32,8	600	41,4

Fixed Deadband Version - Deadband Choice F

Model	Adjustable Range*				Fixed Deadband Tolerance				Max. Working Pressure		Proof Pressure	
	Low end of range on fall		High end of range on rise									
	psi	bar	psi	bar	psi	bar	psi	bar	psi	bar	psi	bar
A	3	0,2	30	2,1	2	0,1	5	0,3	30	2,1	600	41,4
B	20	1,4	200	13,8	4	0,3	10	0,7	200	13,8	600	41,4
C	25	1,7	475	32,8	10	0,7	25	1,7	475	32,8	600	41,4

* Value indicated on dial is the set point on falling pressure.

Deadband represents the reset point above this setting. Dial setting plus deadband must not exceed adjustable range.



25 Series

25 Series

how to order

Select a single letter or number "Code" to make up a part number.

25	A	1	F	2	A	M201
Series Designation	Model/Range	Number of Switches	Pressure Connection	Sensor Material	Deadband	Miscellaneous Options

(Example of "Code") 25 A 1 F 2 A M201

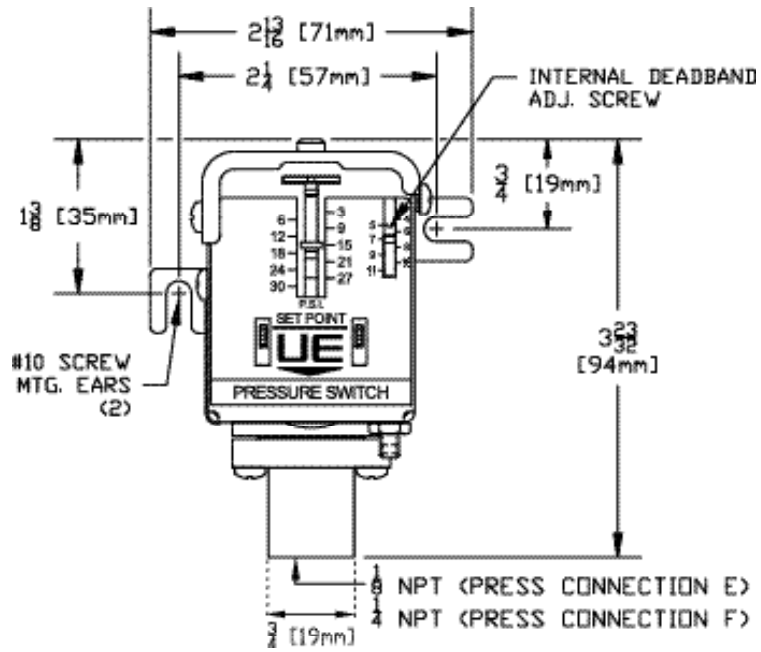
COMPONENTS

CODE	DESCRIPTION
SERIES DESIGNATION 25	Designation for 25 Series product line
MODEL/RANGE A B C	3 to 30 psi 20 to 200 psi 25 to 475 psi
NUMBER OF SWITCHES 1	(1) SPDT snap-switch, 20 A @ 480 VAC resistive
PRESSURE CONNECTION E F	1/8" NPT(female), Brass Pressure Connection 1/4" NPT(female), Brass Pressure Connection
SENSOR MATERIAL 2 3 4	Buna-N Viton® EPDM
DEADBAND F A	Fixed Adjustable
MISCELLANEOUS OPTIONS M201 M230* M444 M446	Factory set point Set adjustable deadband Paper tag Stainless steel tag

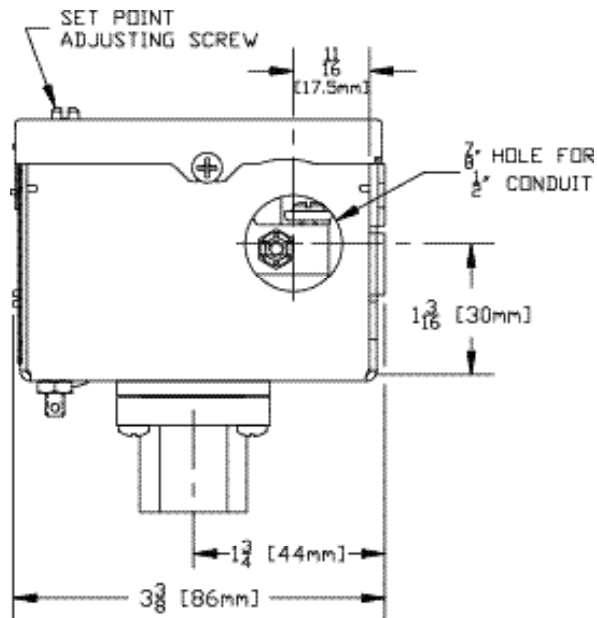
* Do not specify M201 when specifying M230

dimensional drawings

Front View



Side View



RECOMMENDED PRACTICES AND WARNINGS

United Electric Controls Company recommends careful consideration of the following factors when specifying and installing UE pressure and temperature units. Before installing a unit, the Installation and Maintenance instructions provided with unit must be read and understood.

- To avoid damaging unit, proof pressure and maximum temperature limits stated in literature and on nameplates must never be exceeded, even by surges in the system. Operation of the unit up to maximum temperature is acceptable on a limited basis (i.e., start-up, testing) but continuous operation must be restricted to the designated adjustable range. Excessive cycling at maximum temperature limits could reduce sensor life.
- A back-up unit is necessary for applications where damage to a primary unit could endanger life, limb or property. A high or low limit switch is necessary for applications where a dangerous runaway condition could result.
- The adjustable range must be selected so that in correct, inadvertent or malicious setting at any range point cannot result in an unsafe system condition.
- Install unit where shock, vibration and ambient temperature fluctuations will not damage unit or affect operation. Orient unit so that moisture does not enter the enclosure via the electrical connection. When appropriate, this entry point should be sealed to prevent moisture entry.
- Unit must not be altered or modified after shipment. Consult UE if modification is necessary.
- Monitor operation to observe warning signs of possible damage to unit, such as drift in set point or faulty display. Check unit immediately.
- Preventative maintenance and periodic testing is necessary for critical applications where damage could endanger property or personnel.
- For all applications, a factory set unit should be tested before use.
- Electrical ratings stated in literature and on nameplate must not be exceeded. Overload on a switch can cause damage, even on the first cycle. Wire unit according to local and national electrical codes, using wire size recommended in installation sheet.
- Use only factory authorized replacement parts and procedures.
- Do not mount unit in ambient temp. exceeding published limits.

LIMITED WARRANTY OF REPAIR AND REPLACEMENT

Seller warrants that the product there by purchased is, upon delivery, free from defects in material and workmanship and that any such product which is found to be defective in such workmanship or material will be repaired or replaced by Seller (F.O.B. UE Watertown); provided, however, that this warranty applies only to equipment found to be so defective within a period of 18 months from the date of manufacture by the Seller (36 months for the Spectra 12 and One Series products). Seller shall not be obligated under this warranty for alleged defects which examination discloses are due to tampering, misuse, neglect, improper storage, and in any case where products are disassembled by anyone other than authorized Seller's representatives.

EXCEPT FOR THE LIMITED WARRANTY OF REPAIR AND REPLACEMENT STATED ABOVE, SELLER DISCLAIMS ALL WARRANTIES WHATSOEVER WITH RESPECT TO THE PRODUCT, INCLUDING ALL IMPLIED WARRANTIES OF MERCHANTABILITY OR FITNESS FOR ANY PARTICULAR PURPOSE.

LIABILITY LIMITATION

SELLER'S LIABILITY TO BUYER FOR ANY LOSS OR CLAIM, INCLUDING LIABILITY INCURRED IN CONNECTION WITH (I) BREACH OF ANY WARRANTY WHATSOEVER EXPRESSED OR IMPLIED, (II) A BREACH OF CONTRACT, (III) A NEGLIGENT ACT OR ACTS (OR NEGLIGENT FAILURE TO ACT) COMMITTED BY SELLER, OR (IV) AN ACT FOR WHICH STRICT LIABILITY WILL BE IMPUTED TO SELLER, IS LIMITED TO THE LIMITED WARRANTY OF REPAIR AND REPLACEMENT STATED HEREIN. IN NO EVENT SHALL THE SELLER BE LIABLE FOR ANY SPECIAL, INDIRECT, CONSEQUENTIAL OR OTHER DAMAGES OF A LIKE GENERAL NATURE, INCLUDING, WITHOUT LIMITATION, LOSS OF PROFITS OR PRODUCTION, OR LOSS OR EXPENSES OF ANY NATURE INCURRED BY THE BUYER OR ANY THIRD PARTY.

UE specifications subject to change without notice.

U.S. SALES OFFICES

United Electric Controls
32 Highland Rd.
South Hampton, NH 03827
Phone: 603-394-0078
FAX: 603-394-0175

United Electric Controls
28 N. Wise Ave.
Freeport, IL 61032
Phone: 815-235-3501
FAX: 815-235-3847

United Electric Controls
1022 Vineyard Drive
Conyers, GA 30013
Phone: 770-483-8400
FAX: 770-929-8716

United Electric Controls
5829 Grazing Court
Mason, OH 45040
Phone: 513-398-3175
FAX: 513-398-3076

United Electric Controls
19335 Hadley
Stilwell, KS 66085
Phone: 913-685-2775
FAX: 913-685-2774

United Electric Controls
1753 Beach Street
San Francisco, CA 94123
Phone: 415-563-5811
FAX: 415-563-5909

INTERNATIONAL OFFICES

AUSTRALIA
United Electric Controls
(Australia) PTY Ltd
Unit 2, 615 Warrigal Road
Locked Bag 600
Ashburton, Victoria
3147, Australia
Phone: 613-9567-0750
FAX: 613-9567-0755

BELGIUM
United Electric Controls-Europe
G. Van Gervenstraat 19A
B-9120 Beveren-Waas, Belgium
Phone: 32-37554-383
FAX: 32-37552-747

CANADA
United Electric Controls
(Canada) Ltd
5320 Bradco Boulevard
Mississauga, Ontario
L4W 1G7 Canada
Phone: 905-625-5082
FAX: 905-625-5709

GERMANY
United Electric Controls
An Der Zentlinde 21
D-64711 Erbach, Germany
Phone: 496-062-7400
FAX: 496-062-7501

INDIA
United Electric Controls
Amar Hill, Saki Vihar Road
Powai, Mumbai 400 072
Phone: 91-22-857-6921
FAX: 91-22-857-1707

MALAYSIA
United Electric Controls, Far East
No. 1-2-2, 2nd Floor
Jalan 4/101C
Cheras Business Centre
Batu 5, Jalan Cheras
56100 Kuala Lumpur, Malaysia
Phone: 603-9133-4122
FAX: 603-9133-4155

MEXICO
United Electric Controls
Chihuahua 129-1 NTE
Unidad Nacional 89410
Madero, TAM
Mexico
Phone: 52-833-210-0646
FAX: 52-833-210-5761



UNITED ELECTRIC
CONTROLS

180 Dexter Avenue, P.O. Box 9143
Watertown, MA 02471-9143 USA
Telephone: 617 926-1000 Fax: 617 926-2568
<http://www.ueonline.com>